



Structo®

# 3D Printing Solutions



## DentaForm

The original MSLA-powered 3D printer for the high throughput production of dental appliances in dental and orthodontic laboratories.



MSLA 2.0



Dental Applications



Industrial Applications



78 mm / Hr  
Printing Speed  
(150um)

## ST-01

An MSLA 2.0-powered 3D printer for the high throughput production of dental appliances in dental and orthodontic laboratories.



MSLA 2.0



Dental Applications



Industrial Applications



xx mm / Hr  
Printing Speed

## ST-32

A semi-automated 3D printer for round-the-clock production of high-volume clear aligner models in dental and orthodontic laboratories.



Lights-Out  
Manufacturing



Auto Platform  
Replacement



16-hours  
Non-Intervention



sales@structo3d.com

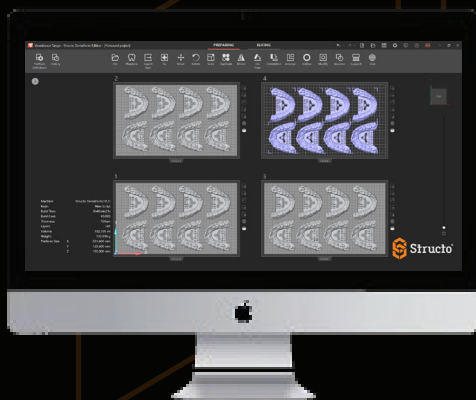
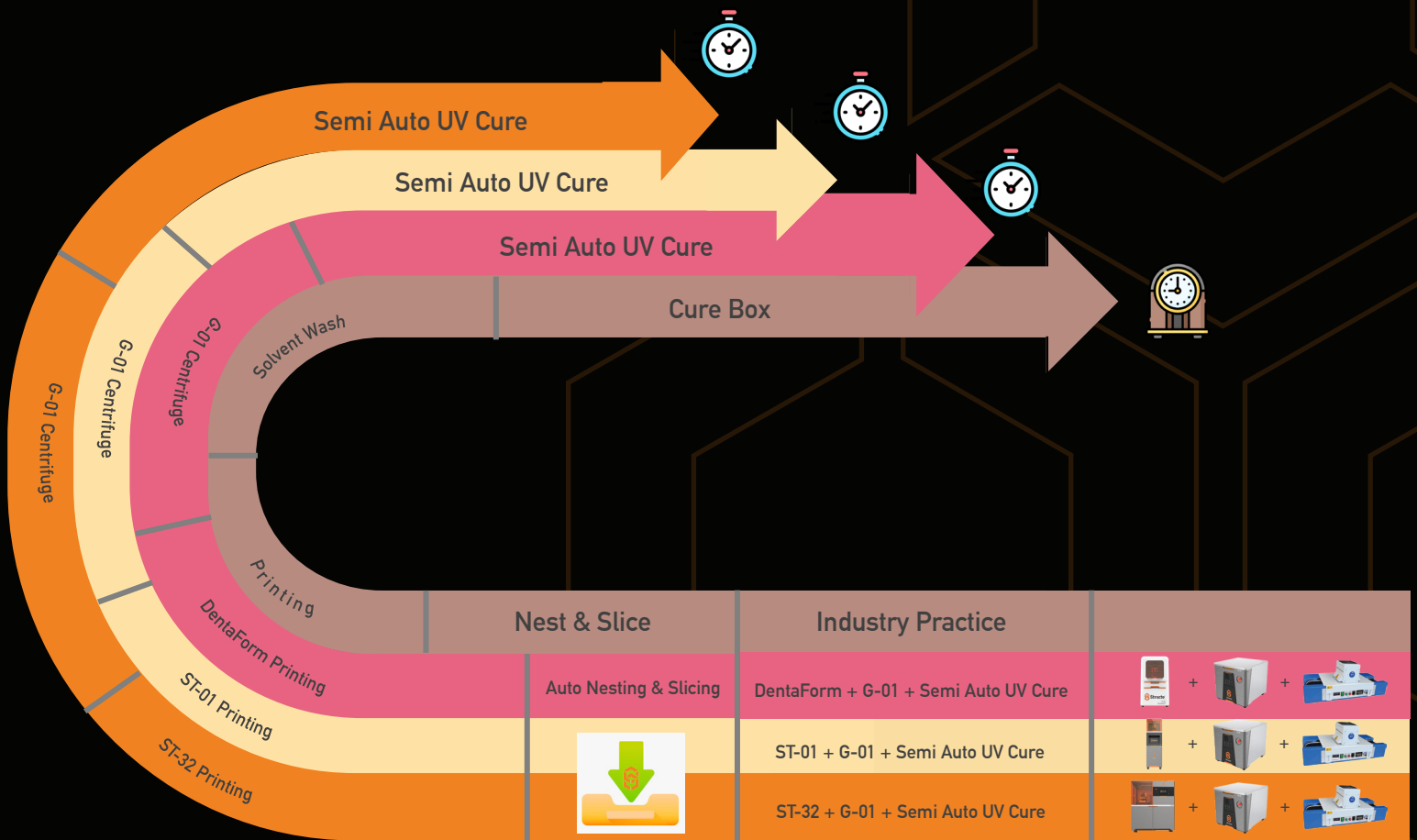


www.structo3d.com

# Efficient 3D Printing Workflow

Structo covers the entire MSLA resin 3D printing workflow from end to end, allowing users to go from digital file to final printed part ready for end use cases.

Compared to conventional 3D printing workflows, Structo's workflow is designed for high efficiency, high throughput round-the-clock production.



## Phantom

Improves the production efficiency of upstream services for standard dental workflows and help scale fast.

The Phantom solution allows dental labs and high-volume factories to increase their efficiency. This is done by smartly automating upstream file processing services such as : file repair, automated nesting and assigns positioning. Customers can manage, monitor, and get printer analytics.

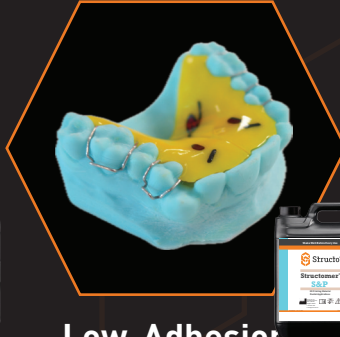
# Dental Applications



**Aligner Models**



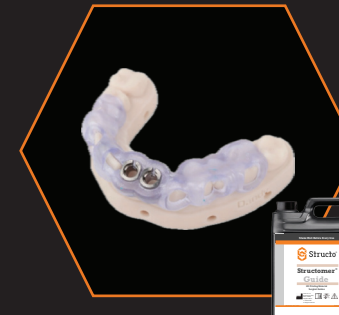
**Precision Fit Implant Models**



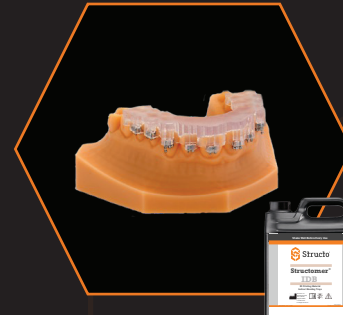
**Low-Adhesion Study Models**



**Low-Adhesion Study Models**



**Surgical Guides**



**Optical Digital Inirect Bonding**



**Crown & Bridge Models**



**Impression Trays**



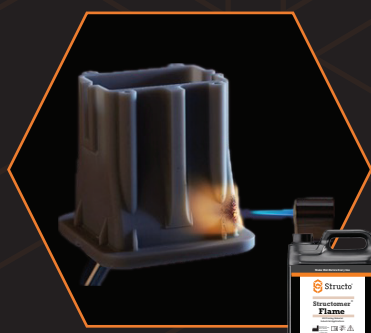
# Industrial Applications



**Rigid**



**ESD**



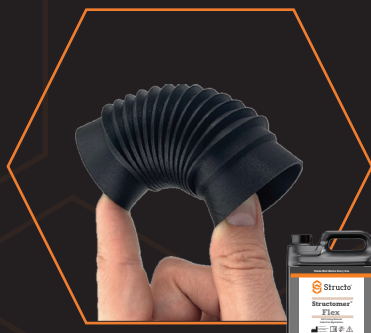
**Flame Retardant**



**Elastomer**



**ABS-Like**



**Flexible**





**Structo**<sup>®</sup>

**THE FUTURE IS PERSONALISED**



[sales@structo3d.com](mailto:sales@structo3d.com)



[www.structo3d.com](http://www.structo3d.com)